

# SR Scales®

by **SR**® Instruments, Inc.

**SR463iR SERIES**



**In-Floor Platform Scale**

## Operating and Service Manual

---

---

## TABLE OF CONTENTS

TABLE OF FIGURES.....	2
PACKING CHECKLIST- SR463iR (TWO SEPARATE SHIPMENTS).....	3
PACKING CHECKLIST- SR463iR (SINGLE SHIPMENT).....	3
PACKING CHECKLIST- SR463iR-3 (TWO SEPARATE SHIPMENTS) .....	4
PACKING CHECKLIST- SR463iR-3 (SINGLE SHIPMENT).....	4
PACKING CHECKLIST- SR463iR-4 (TWO SEPARATE SHIPMENTS) .....	5
PACKING CHECKLIST- SR463iR-4 (SINGLE SHIPMENT).....	5
ASSEMBLY.....	6
REPLACEMENT PARTS AND ACCESSORIES .....	9
SYSTEM DESCRIPTION .....	10
INTENDED USE.....	10
MAINTENANCE AND CLEANING.....	10
STORAGE AND TRANSPORTATION .....	10
SPECIFICATIONS.....	11
BUTTON FUNCTIONS .....	12
BASIC SYSTEM OPERATION.....	13
THEORY OF OPERATION .....	14
CALIBRATION.....	15
TROUBLESHOOTING .....	17
WARRANTY.....	19

## TABLE OF FIGURES

Figure 1: Wall Box Assembly/Conduit Placement.....	6
Figure 2: Conduit Placement and Installation Tabs.....	6
Figure 3: Conduit Hole in Scale Frame .....	6
Figure 4: Concrete Fill and Installation Tabs .....	7
Figure 5: Hardware Placement.....	7
Figure 6: Cable Connection Inside Frame.....	7
Figure 7: Side Clearance Adjustment Bolts .....	8
Figure 8: Front Panel Assembly .....	9
Figure 9: Button Display .....	12
Figure 10: Calibration Tolerance Table .....	15
Figure 11: Calibration Switch Diagram .....	15

**PACKING CHECKLIST- SR463iR (Two Separate Shipments)  
 In-Floor Platform Scale**

√	DESCRIPTION	QUANTITY
	<b>1st Shipment</b>	
	WALL BOX ASSEMBLY	1 ea
	PIT FRAME ASSEMBLY	1 ea
	CONDUIT	1 ea
	¼" LONG FLAT HEAD SCREW	4 ea
	INSTALLATION INSTRUCTIONS	1 ea
	<b>2<sup>nd</sup> Shipment</b>	
	CABLE ASSEMBLY	1 ea
	PLATFORM ASSEMBLY 32 IN X 36 IN	1 ea
	FRONT PANEL ASSEMBLY	1 ea
	½" LONG BUTTON HEAD SCREW	4 ea
	STAR WASHERS	4 ea
	CALIBRATION CERTIFICATE	1 ea
	WARRANTY CARD	1 ea
	MANUAL	1 ea

**PACKING CHECKLIST- SR463iR (Single Shipment)  
 In-Floor Platform Scale**

√	DESCRIPTION	QUANTITY
	<b>Box 1</b>	
	FRONT PANEL/WALL BOX ASSEMBLY	1 ea
	PLATFORM/PIT FRAME ASSEMBLY 32 IN X 36 IN	1 ea
	CONDUIT	1 ea
	CABLE ASSEMBLY	1 ea
	¼" LONG FLAT HEAD SCREW	4 ea
	½" LONG BUTTON HEAD SCREW	4 ea
	STAR WASHERS	4 ea
	INSTALLATION INSTRUCTIONS	1 ea
	CALIBRATION CERTIFICATE	1 ea
	WARRANTY CARD	1 ea
	MANUAL	1 ea

**PACKING CHECKLIST- SR463iR-3 (Two Separate Shipments)  
 In-Floor Platform Scale**

√	DESCRIPTION	QUANTITY
	<b>1st Shipment</b>	
	WALL BOX ASSEMBLY	1 ea
	PIT FRAME ASSEMBLY	1 ea
	CONDUIT	1 ea
	¼" LONG FLAT HEAD SCREW	4 ea
	INSTALLATION INSTRUCTIONS	1 ea
	<b>2<sup>nd</sup> Shipment</b>	
	CABLE ASSEMBLY	1 ea
	PLATFORM ASSEMBLY 32 IN X 50 IN	1 ea
	FRONT PANEL ASSEMBLY	1 ea
	½" LONG BUTTON HEAD SCREW	4 ea
	STAR WASHERS	4 ea
	CALIBRATION CERTIFICATE	1 ea
	WARRANTY CARD	1 ea
	MANUAL	1 ea

**PACKING CHECKLIST- SR463iR-3 (Single Shipment)  
 In-Floor Platform Scale**

√	DESCRIPTION	QUANTITY
	<b>Box 1</b>	
	FRONT PANEL/WALL BOX ASSEMBLY	1 ea
	PLATFORM/PIT FRAME ASSEMBLY 32 IN X 50 IN	1 ea
	CONDUIT	1 ea
	CABLE ASSEMBLY	1 ea
	¼" LONG FLAT HEAD SCREW	4 ea
	½" LONG BUTTON HEAD SCREW	4 ea
	STAR WASHERS	4 ea
	INSTALLATION INSTRUCTIONS	1 ea
	CALIBRATION CERTIFICATE	1 ea
	WARRANTY CARD	1 ea
	MANUAL	1 ea

**PACKING CHECKLIST- SR463iR-4 (Two Separate Shipments)  
 In-Floor Platform Scale**

√	DESCRIPTION	QUANTITY
	<b>1st Shipment</b>	
	WALL BOX ASSEMBLY	1 ea
	PIT FRAME ASSEMBLY	1 ea
	CONDUIT	1 ea
	¼" LONG FLAT HEAD SCREW	4 ea
	INSTALLATION INSTRUCTIONS	1 ea
	<b>2<sup>nd</sup> Shipment</b>	
	CABLE ASSEMBLY	1 ea
	PLATFORM ASSEMBLY 48 IN X 72 IN	1 ea
	FRONT PANEL ASSEMBLY	1 ea
	½" LONG BUTTON HEAD SCREW	4 ea
	STAR WASHERS	4 ea
	CALIBRATION CERTIFICATE	1 ea
	WARRANTY CARD	1 ea
	MANUAL	1 ea

**PACKING CHECKLIST- SR463iR-4 (Single Shipment)  
 In-Floor Platform Scale**

√	DESCRIPTION	QUANTITY
	<b>Box 1</b>	
	FRONT PANEL/WALL BOX ASSEMBLY	1 ea
	PLATFORM/PIT FRAME ASSEMBLY 48 IN X 72 IN	1 ea
	CONDUIT	1 ea
	CABLE ASSEMBLY	1 ea
	¼" LONG FLAT HEAD SCREW	4 ea
	½" LONG BUTTON HEAD SCREW	4 ea
	STAR WASHERS	4 ea
	INSTALLATION INSTRUCTIONS	1 ea
	CALIBRATION CERTIFICATE	1 ea
	WARRANTY CARD	1 ea
	MANUAL	1 ea

## ASSEMBLY

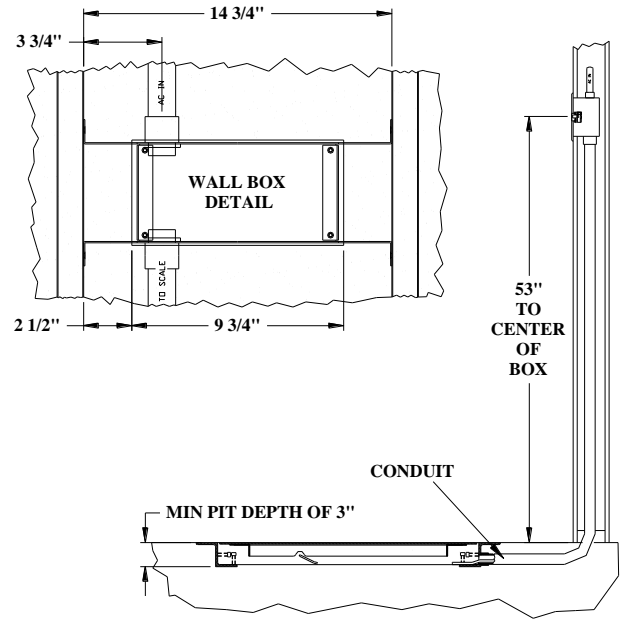
**STEP 1:** Unpack the scale system and check parts against the **PACKING CHECKLIST**. If there are any missing or damaged parts, please call the Service Hotline at: 1-800-654-6360.

**STEP 2:** Verify that the serial number on the label of Wall Box Display matches that on Platform Base.

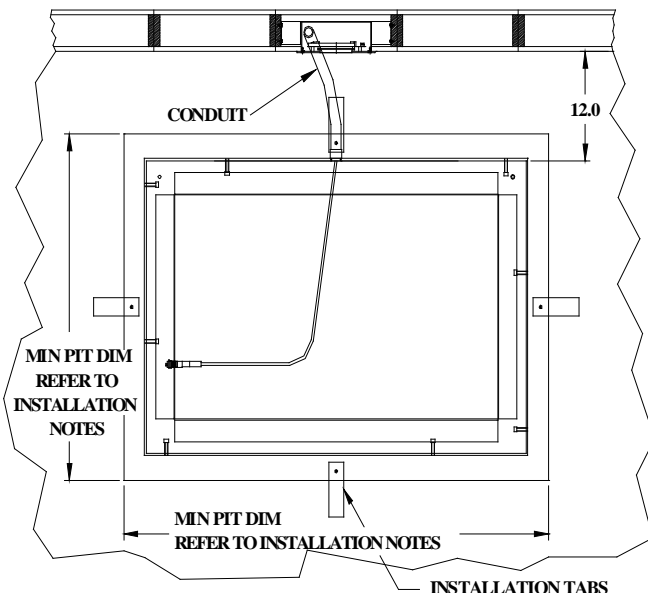
**STEP 3:** (Figure 1) Mount Wall Box Display into wall and run the conduit, with connector cable inside, down through wall and into pit as shown.

**STEP 4:** Prepare pit area to accept the Scale Frame. It is recommended that a properly plumbed drain be installed in the center of pit to avoid any water buildup that might damage scale.

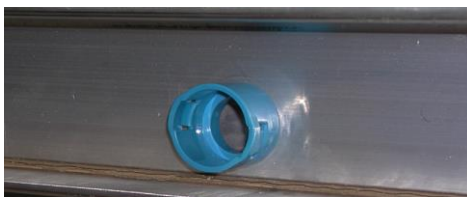
**STEP 5:** (Figure 2) Center the Scale Frame in the pit using the supplied installation tabs to suspend the frame in place (see “**Pit Area Installation Notes**”).



**Figure 1: Wall Box Assembly/Conduit Placement**



**Figure 2: Conduit Placement and Installation Tabs**

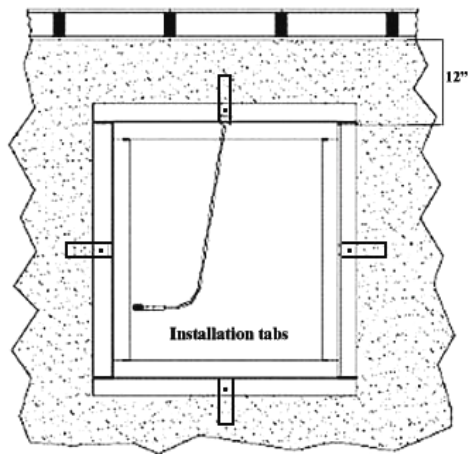


**Figure 3: Conduit Hole in Scale Frame**

### Pit Area Installation Notes

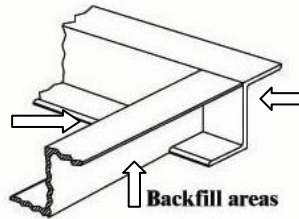
- This is a rectangular frame so it is important to check the placement specifications to make sure the conduit connection is properly placed facing the wall where the conduit/cable connection is located. There are holes cut for conduit entry in the center of two sides of the frame so the scale can be placed with either the long or short side against wall (Figure 3). Run conduit/cable through hole and into pit area.
- **For 32" x 36" Platforms:** If using supplied installation tabs to suspend frame while pouring concrete, pit perimeter dimensions cannot exceed 44"x 48".
- **For 32" x 50" Platforms:** If using supplied installation tabs to suspend frame while pouring concrete, perimeter dimensions of pit cannot exceed 44"x 62".
- **For 48" x 72" Platforms:** If using supplied installation tabs to suspend frame while pouring concrete, pit perimeter dimensions cannot exceed 60"x 84".

## ASSEMBLY cont'd



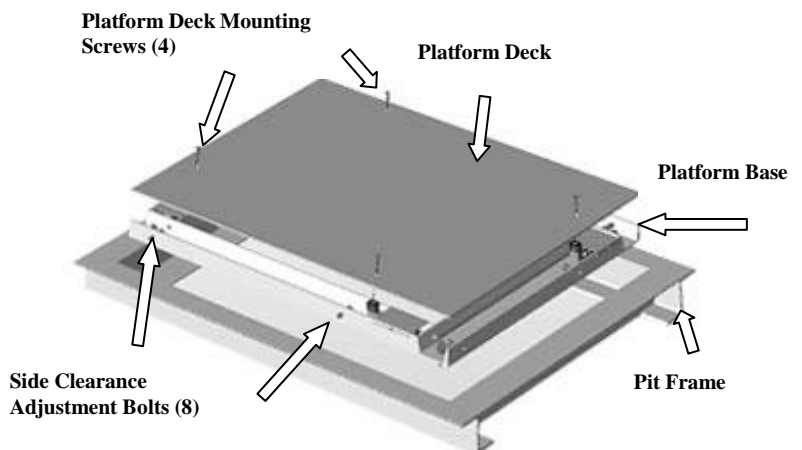
**Figure 4: Concrete Fill and Installation Tabs**

**STEP 6:** (Figure 4) Back fill around the perimeter of the Pit Frame Assembly with 3000PSI concrete. Trowel the concrete level with the scale frame and existing floor. Trowel the base of the pit level with the base of the frame with a gradient toward the centered drain, if used. Conduit and cable should be left free so cable can be easily connected to the Platform Assembly.



**STEP 7:** (Figure 5) When the concrete has set, remove and discard the installation tabs and screws. Install the four 1/4" long flat head screws into holes left by plate removal.

**STEP 8:** Remove the Platform Assembly from the Base Assembly using a 5/32" hex wrench to remove the four (4) mounting screws and set aside.



**Figure 5: Hardware Placement**



**Figure 6: Cable Connection Inside Frame**

**STEP 9:** (Figure 6) Place the Platform Assembly into the Pit Frame Assembly. The cable connection will plug into the connector on the platform base. Ensure extra cable does not interfere with platform top.

## ASSEMBLY cont'd

**Note:** This scale is designed so that the Platform Assembly is level with the Pit Frame Assembly. When tiling or carpeting the platform deck, be sure to compensate for the thickness of the material. **Tiling Tip:** If tiling the floor, the use of an extra tile (or something with the same surface height) is placed under each of the four leveling feet of the pit frame. This will bring the scale surface flush with the tiled floor.

**STEP 10:** (Figure 7) Adjust the eight (8) Side Clearance Adjustment Bolts, so that the Platform Assembly is at an equal distance from all sides of the Pit Frame Assembly. Tighten bolts to secure Platform Assembly in place.

**STEP 11:** (Figure 5) Set the Platform Deck onto the platform base and secure in place with the four (4) top mounting screws. Allow 1/8" gap between Platform Assembly and floor.

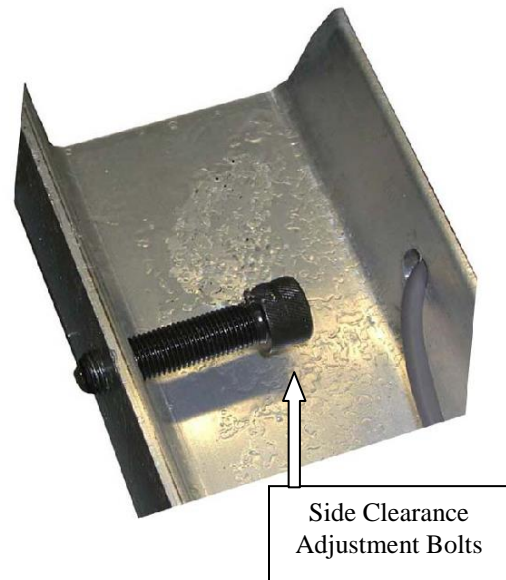


Figure 7: Side Clearance Adjustment Bolts

**⚠ ELECTRIC SHOCK HAZARD ⚠**

**TURN OFF POWER AT CIRCUIT BREAKER FOR DISPLAY PRIOR TO INSTALLING FRONT PANEL. DISPLAY IS POWERED BY 120V A/C 60HZ.**

**⚠ WARNING ⚠**

**QUALIFIED ELECTRICIAN MUST INSTALL DISPLAY ACCORDING TO LOCAL, STATE, AND NATIONAL STANDARDS. 20A OR LESS BREAKER IS RECOMMENDED. GROUND FAULT INTERRUPTER IS RECOMMENDED.**

**STEP 12:** Install building ground wire and green ground wire from Display Front Plate into the terminal lug in the wall box.

**STEP 13:** Connect Transducer Cable to the mating cable on the back of the Display Front Plate

**STEP 14:** Connect A/C power wires to the power supply wire leads



---

---

## ASSEMBLY cont'd

**STEP 15:** Install Front Panel Assembly (Figure 8) to the previously mounted Wall Box Assembly. Use supplied star washers and screws. Ensure the screws are securely tightened.



**Figure 8: Front Panel Assembly**

**STEP 16:** Restore power to the display.

---

---

## REPLACEMENT PARTS AND ACCESSORIES

Part #	Description
SE4961-1	CABLE ASSEMBLY, 12 FT
SE4961-2	CABLE ASSEMBLY, 15 FT
MAN463IR	MANUAL

---

---

## SYSTEM DESCRIPTION

The SR463iR Series weight systems are precision digital scales specifically designed for installation in the floor so the weighing surface is flush.

This scale system employs the latest in microprocessor and load cell technology to provide accurate and repeatable weight data. Four (4) identically matched load cell transducers are strategically placed to ensure an accurate representation of the patient's weight regardless of weight distribution.

The SR463iR Series display units use 120v AC line power that is mounted in a recessed wall box so the display is flush with the wall (Figure 8).

The patient's weight is displayed on a 16-character dot matrix liquid crystal display. The weight data may be viewed in either pounds or kilograms, with a displayed resolution of 0.1 for each.

---

---

## INTENDED USE

The SR463iR Series is designed to be used as a stand-on scale for weighing ambulatory patients as well as a Wheelchair / Chair / Walker scale for semi or non-ambulatory applications.

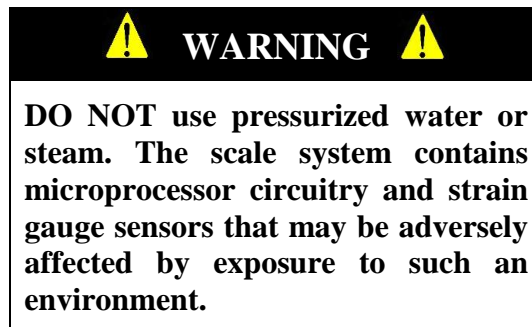
---

---

## MAINTENANCE and CLEANING

Exercise caution when cleaning the display window as it is made of clear polyester and can be scratched by abrasive cleaners. Mild soap and water is recommended for general cleaning and disinfecting. Periodically remove the top and vacuum or sweep in the pit. Also, make sure pit is dry.

**Note:** Do not allow the pit to fill with water.



## STORAGE and TRANSPORTATION

This is a built-in scale system. To maintain proper operation of this instrumentation, storage and transport conditions should not vary outside the following conditions: Relative Humidity 0% to 85%, Ambient Temperature 14°F to 122° (-10°C to +50°C).

---

---

## SPECIFICATIONS

<b>MAXIMUM WEIGHT CAPACITY</b>	1000 lb or 454 kg
<b>PLATFORM SIZE</b>	SR463iR: 32 in x 36 in (81 cm x 91cm) SR463iR-3: 32 in x 50 in (81 cm x 127 cm) SR463iR-4: 48 in x 72 in (122 cm x 183 cm)
<b>DISPLAY TYPE</b>	16-Character dot-matrix LCD
<b>DISPLAY RESOLUTION</b>	0.1 lb/0.1 kg
<b>ACCURACY</b>	0.1% +/- 1 digit of displayed resolution for calibrated range
<b>ZERO</b>	One button Auto-Tare
<b>AUTO POWER DOWN</b>	Adjustable between 30 and 300 seconds
<b>AVERAGING</b>	Automatic digital filter
<b>POWER SUPPLY</b>	120v AC, 50 – 60 Hz
<b>CALIBRATION</b>	Calibration is traceable to NIST standards.
<b>OPERATING CONDITIONS</b>	Normal operating conditions for this product: Ambient Temperature Range: 68°F to 85°F (20°C to 30°C), Relative Humidity Range: 0%-85%. Avoid exposure to high-pressure water or steam.
<b>TRANSPORT and STORAGE</b>	Storage and transport conditions should not vary outside the following conditions: Relative Humidity 0% to 85%, Ambient Temperature 14°F to 122°F (-10°C to +50°C). Remove batteries if storing longer than three (3) months.

## BUTTON FUNCTIONS

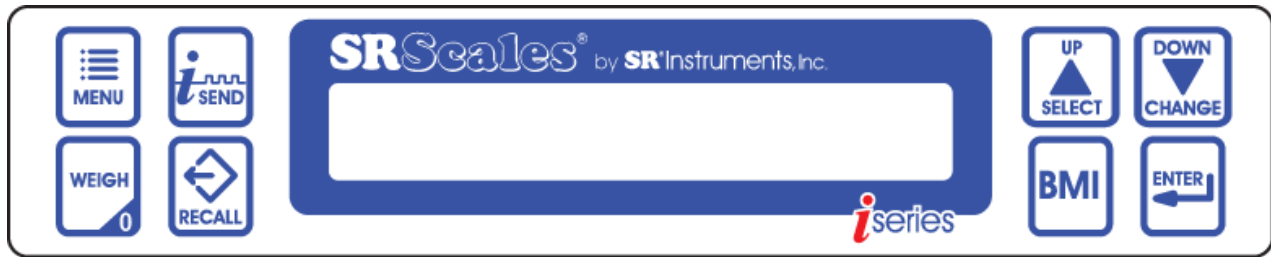


Figure 9: Button Display

### WEIGH



Press and hold to zero scale. Button is used to zero the system before placing the patient on the scale. Ensure that nothing is in contact with the weighing surface during this procedure.

### SEND (PRINTER)



Press to send stored values to printer. Output values include time, date, and weight. If BMI was calculated, BMI and height will be included in the output values. Also, low paper and low batteries are output values. Button is non-operational on this model.

### RECALL



Press to recall the last stored weight. The stored weight will be erased when the scale is zero or another stable weight is stored.

### BMI



Press to calculate BMI. When the “**BMI**” is pressed, the default value “**HT = 65 in**” or “**HT = 165 cm**” is displayed. If there is no stored stable weight, the display will indicate “**NO WEIGHT DATA**” and then go back to the weigh screen “**WT = 0.0 Lb**”.

### MENU



Press Menu to toggle through the menu options.

**UNITS:** Use **UP** or **DOWN** arrow buttons to select “**Lb/ in**” or “**Kg/ cm**”. Press **ENTER** to save changes.

**ON TIME:** Use **UP** or **DOWN** arrow buttons to adjust the “**ON TIME**”. The “**ON TIME**” may be set from 30 to 300 seconds in 30 second increments. Press **ENTER** to save changes.

**gLOCAL:** Non-adjustable. Set at factory.

**TIME and DATE:** Use the **UP** arrow button to select digit. To change digit use the **DOWN** arrow button. Press **ENTER** to save changes.

**NOTE:** When selected, the year position defaults to “00”

Continued next page

---

---

## BUTTON FUNCTIONS con't

### ENTER



Press to save change in digits for calibration, for unit's set-up, for time and date set-up and saving completed calibration data.

### UP / SELECT



Press **UP** to adjust height up from the default for BMI calculation, to increase the scale's "on time", or to select a digit when setting time and date.

### DOWN / CHANGE



Press **DOWN** to adjust the height down from the default for BMI calculation, to decrease the scale's "on time", or to change the value of a selected digit when setting time and date.

---

---

## BASIC SYSTEM OPERATION

### SETTING SYSTEM ZERO



Make sure the scale is free and clear of any obstructions. Press and hold the **ZERO / WEIGH** button. The displayed message will indicate "**HOLD TO ZERO**" and count down to zero. Release the button when display message indicates "**HANDS OFF**". Make sure that nothing is in contact with the scale while zeroing the system. In a few seconds, the display will read "**WT = 0.0 Lb**" (or **Kg**).

### WEIGHING



Position the patient on the scale. The weight stable indicator "□" flashes on the display. When the weight is stable, the weight stable indicator remains solid. The display will indicate the patient's weight in either pounds or kilograms; example: "**WT = 123.5 Lb**". The stable weight is auto stored in memory.

### RECALLING LAST STORED WEIGHT



Press to recall last stored weight. The stored weight will be erased when the scale is zero or another stable weight is stored.

---

## THEORY OF OPERATION

SR Instruments patient weighing systems are digital scales. Strain-gauge force cells convert the force of an applied weight into an analog signal. This signal is amplified by an operational amplifier and converted to a digital signal by an analog to digital converter. The digital signal is transferred to a micro-controller where it is filtered, converted to appropriate units and displayed on a liquid crystal display.

Strain-gauge force cells each contain four strain gauges mounted in a full Wheatstone-bridge configuration. These bridges convert the physical movement of the force cell, due to the applied mass on the system, into minute changes in electrical resistance. These changes in resistance produce a voltage difference across the Wheatstone-bridge, which is amplified by the operational amplifier. The amplifier is configured to current sum the output of each cell, with potentiometers serving to adjust the sensitivity (voltage out per unit of weight applied) of each bridge. The offset potentiometer produces a small current, which nulls the output of the amplifier for an unloaded system.

The output of the operational amplifier is digitized by the analog to digital converter. The converter integrates the analog signal onto the integrating capacitor over a short interval. The integrating capacitor is then discharged at a rate proportional to the reference voltage applied to the converter. The residual voltage on the integrating capacitor is then multiplied by a factor and again discharged at a rate proportional to the reference voltage. The residual voltage from this discharge is again multiplied by a factor and again discharged. The time taken to discharge the capacitor is proportional to the voltage from the operational amplifier, which is proportional to the applied load on the force cells. The time is stored as a binary number in the analog to digital converter and is transferred to the micro-controller when the conversion is complete.

The micro-controller averages and filters the digital output of the analog to digital converter, subtracts the value saved during the system zero operation and scales the filtered output, then displays the result on the liquid crystal display. The micro-controller performs a rolling average of data for continuous weigh and, for AutoHold, the micro-controller averages the data before locking in on the reading. If the data variance is greater than 0.1% in the AutoHold mode, the micro-controller will reset the filter and start a new averaging period.

The micro-controller can be placed in a calibration mode, where the system can be re-calibrated. In the calibration mode, the result of the weigh operation is scaled to match the value by adjusting the “up” and “down” calibration buttons. This new calibration factor is then stored in the non-volatile memory.

## CALIBRATION

**NOTE:** Ensure that nothing is in contact with the scale system during this procedure. Remove hands from the system when noting the displayed calibration results.

### CHECKING CALIBRATION

**STEP 1:** Select known calibrated weights, traceable to NIST.

**NOTE: DO NOT USE** barbells or un-calibrated weights.

**STEP 2:** Zero the scale by pressing and holding the **ZERO/WEIGH** button.

**STEP 3:** Place the calibrated weight on the scale. Wait for scale to stabilize; note scale reading.

**STEP 4:** Scale readings should be within Calibration Tolerance Table (Figure 10)

LOW LIMIT	APPLIED LOAD	HIGH LIMIT
99.9	100.0	100.1
199.8	200.0	200.2
299.7	300.0	300.3
399.6	400.0	400.4
499.5	500.0	500.5
599.4	600.0	600.6
699.3	700.0	700.7
799.2	800.0	800.8
899.1	900.0	900.9
999.0	1000.0	1001.0

Figure 10: Calibration Tolerance Table

! **IMPORTANT** !

**CALIBRATION** Qualified service personnel only should perform this procedure. The SR463iR load cells have no user serviceable components and should not be tampered with for any reason. Re-calibration is generally not required, but should be verified periodically to ensure accuracy. The recommendation for calibration check is at least once every 12 months, or as individual maintenance policy requires.

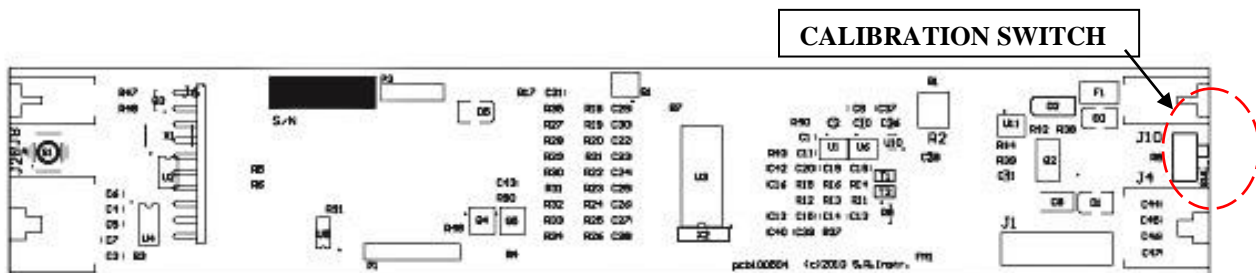


Figure 11: Calibration Switch Diagram

! **CAUTION** !

**The integrated circuits and semiconductors on the printed circuit boards may be damaged by electrostatic discharge (ESD). Be sure to use proper handling precautions at all times.**

Continued next page

---

## CALIBRATION cont'd

### SETTING CALIBRATION

**NOTE:** Ensure that nothing is in contact with the scale system during this procedure. Remove hands from the system when noting the displayed calibration results.

**STEP 1:** Access the Calibration Switch by breaking the Calibration Seal on the underside of the display extrusion. Put the scale system into the Calibration Mode by switching the calibration switch on the display board (Figure 11).

**STEP 2:** Select known calibrated weights, traceable to NIST, up to the Full Scale value (maximum capacity).

**STEP 3:** Press the “MENU” button until “1000.0Lb FULL” is displayed. Set the FULL value to the actual quantity of calibrated weight being used for Full Scale. Use the “UP” arrow button to select the digit and the “DOWN” arrow button to change digit. Press “ENTER” to save changes. Press “WEIGH” button to abort any changes.

**STEP 4:** Press the MENU button until “500.0Lb HALF” is displayed.

**NOTE:** The Half-Scale value is a value between zero and the Full Scale values. It is usually close to half the Full Scale value.

Set the HALF value to the actual quantity of calibrated weight being used for Half Scale. Use the “UP” arrow button to select the digit and the “DOWN” arrow button to change the digit. Press “ENTER” to save changes. Press “WEIGH” to abort the changes.

**STEP 5:** Press MENU button until “3 PT CAL” is displayed. Press the “UP” arrow button.

**STEP 6:** Zero the scale by removing all weight from the platform. Press the “UP” arrow button to “ADD HALF”.

**STEP 7:** Place the calibrated weight on platform for HALF Scale. Allow weight to stabilize. Press “UP” arrow button to save change.

**STEP 8:** Place the calibrated weight on platform for FULL Scale. Allow weight to stabilize. Press “UP” arrow to save change.

**STEP 9:** Press “ENTER” button to save the calibration, or “WEIGH” button to exit without saving.

**STEP 10:** Switch the scale system out of the Calibration Mode on the display board (Figure 11).

**NOTE:** Ensure that no wires have become unplugged during calibration

**STEP 11:** Calibration Seal must be placed over the access hole on the display extrusion by authorized personnel only.



## TROUBLESHOOTING

SYMPTOM	REASON/CORRECTIVE ACTION
Characters only appear on half of the display	Press the “ <b>WEIGH</b> ” button.
Display shows no reading at all	Check to ensure that circuit breaker to the scale is on.
Display reads “ <b>WEIGHT OVERLOAD</b> ”	Disconnect the transducer cable from the platform. If the “ <b>WEIGHT OVERLOAD</b> ” message goes away, the problem is in the platform. Check to make sure the platform transducer wires are intact and pit is clean and dry.
<b>For additional information or assistance, phone our Service Hotline: 1-800-654-6360 or e-mail: <a href="mailto:sri@srinstruments.com">sri@srinstruments.com</a></b>	



---

---

## NOTES

---

## WARRANTY

### FOUR (4) YEAR LIMITED WARRANTY

Each **SR Scales**<sup>®</sup> system is manufactured with high quality components. SR Instruments, Inc. warrants that all new equipment will be free from defects in material or workmanship, under normal use and service, for a period of four (4) years from the date of purchase by the original purchaser. Normal wear and tear, injury by natural forces, user neglect, and purposeful destruction are not covered by this warranty. Warranty service must be performed by the factory or an authorized repair station. Service provided on equipment returned to the factory or authorized repair station includes labor to replace defective parts. Goods returned must be shipped with transportation and/or broker charges prepaid. SR Instruments, Inc.'s obligation is limited to replacement of parts that have been so returned and are disclosed to SR Instruments, Inc.'s satisfaction to be defective. The provisions of this warranty clause are in lieu of all other warranties, expressed or implied, and of all other obligations or liabilities on SR Instruments, Inc.'s part, and it neither assumes nor authorizes any other person to assume for SR Instruments, Inc. any other liabilities in connection with the sale of said articles. In no event shall SR Instruments, Inc. be liable for any subsequent or special damages. Any misuse, improper installation, or tampering, shall void this warranty.

### DAMAGED SHIPMENTS

Title passes to purchaser upon delivery to Transportation Company. Any claims for shortage or damage should be filed with the delivery carrier by purchaser.

### RETURN POLICY

All products being returned to SR Instruments, Inc. require a Return Goods Authorization number (RGA). To receive an RGA, call our Technical Service Team at 716-693-5977 or toll-free in the USA and Canada at 800-654-6360.

When inquiry is made, please supply model and serial numbers, purchase order, if the scale was bought on contract, and reason for return.

Generally, deleted, damaged, and outdated merchandise will not be accepted for credit. A minimum restocking charge of 15% will be assessed on return of current merchandise.

All returns are to be shipped FREIGHT PREPAID to: SR Instruments, Inc., 600 Young Street, Tonawanda, NY 14150.

### RESTOCKING FEE

- **15% fee** for any scale that has been opened and used
- **10% fee** for any scale returned that has been ordered incorrectly or refused delivery with no model change
- **5% fee** if an error in ordering has been made and a different model exchanged
- **No fees** will be charged if the scale is returned because of an error on the part of SR Instruments, Inc.
- **No returns** accepted after 60 days.

**SR**Scales®

**SR**® Instruments, Inc.

**Precision & Technology in  
Perfect Balance®**